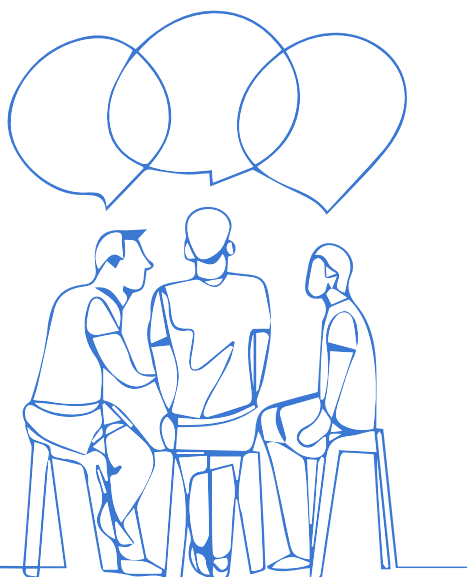


English Language



About the course

English Language explores how language works in the real world in a range of different contexts. You will study a variety of exciting texts and consider how these represent the world around us by analysing language in use. You will look at how language is used to create specific meanings and representations.

You will learn about the differences between male and female talk, the ways in which language is affected by occupational positions and how different social groups interact. The accents and dialects of our different regions and ethnicities will also be studied. Throughout this you will form your own educated opinions on these topics in order to write confidently about them.

In Year 13 you will learn about how language has changed over time and how children learn to speak. As well as this you will produce your own creative piece and an investigation into your own language topic. All of this is underpinned by an analytical understanding of language.

This work links to exams at the end of year 13 where you will show your understanding of representation, the language frameworks and your ability to write creatively for a specific audience and purpose.

This course teaches you not only language, but the world in which language is used.

Assessment

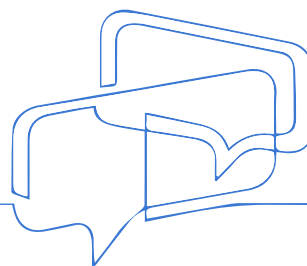
The examinations consist of 2 exam papers comprising 80% of your marks. The content you will cover includes language and gender, occupation, regional accents, language change and child language acquisition. You will also analyse unseen texts exploring how a writer is using language for particular genres, purposes and audiences.

20% of your marks are in the NEA portfolio where you produce a piece of creative writing with an accompanying commentary on your work. You also produce an investigation into a topic of your interest.

Careers

As well as studying Language and Linguistics at University, past students have gone on to study: Journalism, Law, MFL, Education, Journalism, Drama, Economics, Public Relations, Marketing, Business Studies.

We have former students now acting as writers and editors of online and print publications as well as those who have pursued careers in teaching, the arts, law and business management.



Entry Requirements

At least a 6 in GCSE English language and a 5 in English literature. Clear written communication skills. You must enjoy reading, be analytical in your approach and be interested in the world around you.

Find Out More

For more information you can contact Mr Bell on phil.bell@whitleybayhighschool.org.

[Rob Drummond on twitter](#) is really interesting on language in the world.

The Lexis podcast through Anchor FM is also recommended.

