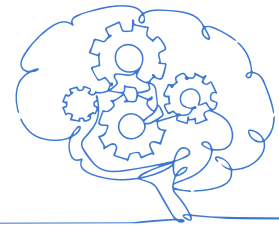


Psychology



About the course

Are you;

- Interested in human behaviour?
- Willing to accept there may be more than one answer?
- Able to critically evaluate evidence?
- Ready to design, conduct and analyse data in your own research?

Psychology at A level explores all these avenues. It is the course for anyone interested in learning more about human behaviour.

In fact, Psychology is defined as the study of human behaviour and therefore the course includes content in a wide variety of topics. At AS level these are: attachment, memory, social influence, approaches and psychopathology.

Exploring questions like:

- How and why do we form attachments to caregivers?
- Can witnesses be relied upon to recall details of crimes accurately?
- How do other people influence our behaviour?
- Are we in control of how we behave, is this a conscious choice?
- What is depression? A phobia? OCD? How do we treat these disorders?

Year 2 explores topics in greater depth, Schizophrenia, Relationships, Biopsychology and Addiction. Throughout the course we draw links between content and the wider world as we are studying the diversity of human behaviour.

In Psychology there is a focus on research methods across both years. Students will develop skills in designing and conducting research and evaluating the reliability and validity of research. These skills contribute to drawing conclusions and discussing theory in every topic area across the course.

Entry Requirements

The course requires a balance of scientific / maths based understanding to tackle research methods. It also builds on fluent written communication in the form of essays and explanation. Therefore, students are required to have gained at GCSE level;

- 5 English
- 5 Maths
- 5-5 in double award science (Or two 5s in Triple science)

Find Out More

To find out more about what Psychology is, or whether you should study Psychology at A Level why not check out the British Psychological Societies 'readers digest' [here](#):

Or prefer listening to the research? The PsychCrunch podcast from the BPS is available [here](#):

Alternatively contact Head of Psychology - jessica.watson@whitleybayhighschool.org



Assessment

At A-level there are three exams at the end of the 2 year course; each account for one third of your A-level. The three exams last 2 hours and are worth 96 marks each.

The exams consist of multiple choice, short answer and extended writing questions.

At LEAST 25% of each exam will be research methods (even if it is not a topic on that paper) and 10% of each paper will be maths based analysis questions.

Careers

Psychology has a range of transferable skills such as analytical thinking, discussion, data analysis and practical research skills that will prepare you for further education and the possibility of a range of fantastic careers. Students cite understanding human behaviour as important for their future study/careers.

The top seven degree courses taken by students who have an A-level in Psychology are: Psychology, English Studies, Sociology, Business Studies, Teaching, Sport and Exercise Science, Law.

Studying Psychology can lead onto a whole host of exciting career options, including:

Marketing, Business Development, Accountancy, Human Resources, Forensic Psychology, Occupational Therapy, Clinical Psychology, Nursing, Teaching.

What students say

The content is just really interesting and it never felt like a chore to have to learn or study it. It has given me an insight into how children learn and approaches to human behaviour.

Primary Teaching Graduate

The most important thing in considering doing Psychology is having an interest in people and questioning why they behave the way they do. It is a subject that requires scientific maths and English skills so be prepared to do all of these!

3rd Year, Psychology

The lessons themselves are the best bit of studying Psychology at Whitley: always really engaging but focused on the content. I now study a Geography degree and found Psychology really helpful.

Geography Graduate